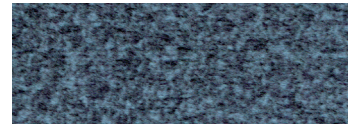




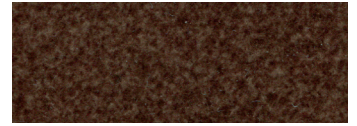
Standard Fabrics:



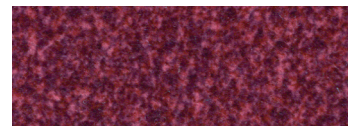
Calypso



Camel



Hazelnut



Shiraz



Sterling

NEW Sinda Polyurethane!

No upcharge on crossover fabrics in the Sinda pattern on PR511 only.

* An upcharge will apply for all other crossover fabrics.

Standard Features:

- Patented Twilight™ Tilt Technology
- Patented MaxiComfort® Positioning with Four-way Motion Seat
- Adjustable Headrest
- Adjustable Lumbar
- Programmable AutoDrive™ Hand Control
- Removable Butler Tray Table
- Removable LED Light
- Wireless Phone Charger
- USB Charging Port
- Drink Holder
- Full & Straight Lift Options
- SmartTek® Diagnostic System

Optional Features*:

- HeatWave™ Technology
- Deluxe Heat & Vibrating Massage
- Nirvana™ Swedish Air Massage with Far Infrared Heat Therapy

*Additional lead time may apply

Cloud+
PR525



Comfort Zone[™]
by GOLDEN

Relax and recharge with personalized comfort in the Cloud+ Power Lift Recliner. Designed for everyday luxury, it features a plush seam back and a posture-supportive memory foam bucket seat, along with memory foam armrests for lasting comfort. Positioning options are endless with our 5-zone positioning system, which includes our patented Twilight Technology, patented MaxiComfort® positioning, adjustable headrest, and lumbar support. The right arm compartments house a hand control dock, wireless phone charger, and power port compatible with the included LED reading light and butler tray. On the left, you'll find a built-in drink holder, USB port, and extra storage space. Enhance your experience with optional accessories like a Bluetooth speaker, tablet holder, color-changing snack bowl, fan, diffuser, and more. As a bonus, you can use the drink holder and table without losing the comfort of the armrests thanks to the split design! Upgrade your comfort and wellness experience by adding our Nirvana™ Swedish Air Massage with Far Infrared heat, Deluxe Heat & Vibrating Massage, or HeatWave™ Technology.



MAXICOMFORT® Series PR525

Model Number	PR525-SMA	PR525-MED	PR525-LAR
Size	Small	Medium	Large
Class II Medical Device	YES	YES	YES
Weight Capacity	400 LBS	400 LBS	400 LBS
Positioning	Twilight	Twilight	Twilight
Comfort Zone(s)	5	5	5
Twilight Technology	YES	YES	YES
ZG+	YES	YES	YES
Chaise Seat	YES	YES	YES
Pocketed Coil Seat	NO	NO	NO
Back Type	Seam	Seam	Seam
Removable Back Type	Quick Release	Quick Release	Quick Release
Head Rest Cover	NO	NO	NO
Arm Rest Covers	NO	NO	NO
Overall Width	37.5"	37.5"	39"
Overall Height	43"	46"	48"
Seat Width	23"	23"	25"
Floor to Top of Seat	20"	21"	22"
Seat Depth	19"	21"	22"
Seat to Top of Back	28"	30"	32"
Seat to Top of Arm	8.5"	7"	8"
Distance Required from Wall Reclined	20.5"	22"	25"
Extension Reclined from Back of Seat to End of Foot Rest	43"	43"	44"
Life Time Warranty, Chair Frame, Lift Frame, Recline Mechanism	YES	YES	YES
Warranty on Electrical Parts	3 YR	3 YR	3 YR
Pro Rated Years 4 Thru 7	YES	YES	YES
Warranty on Mechanical Labor	3 YR	3 YR	3 YR
Warranty on Electrical Labor	1 YR	1 YR	1 YR
Hand Control Routing	Compartment	Compartment	Compartment
Extra Pocket Option	NO	NO	NO
Heat & Vibrating Massage Option	YES	YES	YES
HeatWave Technology Option	YES	YES	YES
Nirvana with HeatWave Option	YES	YES	YES
Power Adjustable Headrest Option	Standard	Standard	Standard
Power Adjustable Lumbar Option	Standard	Standard	Standard
Foot Rest Extension Option	YES	YES	YES
Straight Lift Option	Standard	Standard	Standard
USB Charging Port	YES	YES	YES
Battery Backup	Lithium-ion	Lithium-ion	Lithium-ion
SmartTek Diagnostic System	Standard	Standard	Standard
Place of Origin	USA	USA	USA



Standard Features & Accessories



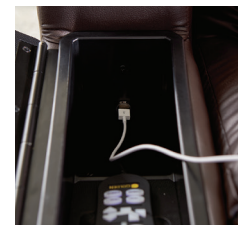
Power Adjustable Headrest & Lumbar



Drink Holder & Storage Compartment



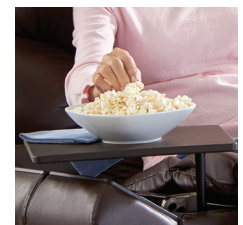
Wireless Phone Charger



USB Charging Port & Storage Compartment



Removable LED Light



Removable Butler Tray Table

Optional Accessories

- Cooling Fan
- Flex Light
- Bluetooth Speaker
- Illuminating Snack Bowl
- Essential Oil Diffuser
- Tablet Holder
- Stem Glass Holder

Visit our website to view optional accessories!



Phone: 800-624-6374
Fax: 800-628-5165
www.goldentech.com



www.facebook.com/goldentechnologies

LIT-SHT-PR525, Rev.A 081225

Comfort Zone™ by GOLDEN

Comfort Zones 1 - 5 This positioning system incorporates all five adjustable comfort zones to create the ultimate wellness comfort experience with our patented Twilight Technology. Each Comfort Zone can be adjusted independently by using the exclusive AutoDrive™ hand control.



Zone 1
LOWER BODY



Zone 2
UPPER BODY



Zone 3
HEADREST



Zone 4
LUMBAR



Zone 5
TWILIGHT TILT

WE PATENTED COMFORT™

PROUDLY MADE



Literature is current at time of printing. Golden Technologies reserves the right to make changes to the product or literature at any time.

Sizes may vary depending on fabric, filling material, upholstery and carpet thickness. All measurements taken on concrete floor using levels and metal rulers.



Complies with
UL 73 and
CSA C22.2 No. 68