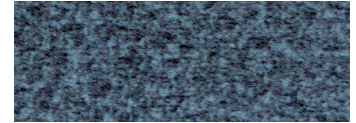




Shown in Brisa® Night Navy\*

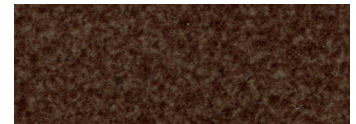
## Standard Fabrics:



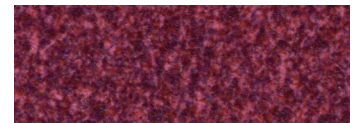
Calypso (TCP)



Camel (TCM)



Hazelnut (THA)



Shiraz (TSZ)



Sterling (TST)

This fabric has a modern, updated look with rich color options. It features our exclusive SofTouch™ with Stain Defense coating.

\* An upcharge will apply for all crossover fabrics.

**Regal  
PR504**



*Comfort Zone™*  
by GOLDEN

Relax and recharge in comfort and style with the PR504 Regal Power Lift Recliner. The Regal is medium/large size with a higher back to comfortably accommodate taller people. It features a stylish open-arm design for convenient storage, a plush seamed back, and posture-encouraging bucket seat to conform to your body allowing you to unwind from your busy day. Positioning options are endless with our 4-Zone Comfort Zone™ positioning system, which offers four adjustable positioning zones: footrest, backrest, headrest, and lumbar all operated by our programmable AutoDrive™ hand control. For extra wellness and comfort, our HeatWave™ Technology comes standard providing therapeutic warmth starting at your shoulders and continuing down to your feet. The right arm compartments feature a special no-spill cup holder that keeps beverages upright while moving into or out of the lifted position and storage for the AutoDrive hand control. The left arm compartments feature a wireless smartphone charger, removable table, an additional USB charging port and hold the HeatWave™ hand control. As a bonus, you can use the cup holder and table without losing the comfort of the armrests thanks to the split design!



## Standard Features:

- Patented MaxiComfort® Positioning
- Adjustable Headrest
- Adjustable Lumbar
- Programmable AutoDrive™ Hand Control
- Removable Table
- Wireless Smartphone Charger
- USB Charging Port
- No-Spill Cup Holder
- Extra Pocket
- HeatWave™ Technology



# MAXICOMFORT® Series PR504

Model Number	PR504-MLA-ST4
Size	MLA
Class II Medical Device	YES
Weight Capacity	400 LBS
Positioning	MaxiComfort
Comfort Zone(s)	4
Twilight Technology	NO
ZG+ Position	NO
Chaise Seat	YES
Pocketed Coil Seat	NO
Back Type	Seam
Removable Back Type	Bracket
Head Rest Cover	NO
Arm Rest Covers	NO
Overall Width	40"
Overall Height	48"
Width Between Arms	23"
Floor to Top of Seat	20.5"
Seat Depth	22.5"
Seat to Top of Back	33"
Seat to Top of Arm	7.5"
Distance Required from Wall Reclined	22"
Extension Reclined from Back of Seat to End of Foot Rest	42.5"
Life Time Warranty, Chair Frame, Lift Frame, Recline Mechanism	YES
Warranty on Electrical Parts	3 YR
Pro Rated Years 4 Thru 7	YES
Warranty on Mechanical Labor	3 YR
Warranty on Electrical Labor	1 YR
Hand Control Routing	Right Arm Compartment
Extra Pocket Option	Standard
HeatWave Technology	Standard
Heat & Vibrating Massage Option	YES
Articulating Headrest Option	Standard
Adjustable Lumbar Option	Standard
Foot Rest Extension Option	YES
Straight Lift Option	YES
USB Charging Port	Left Arm Compartment
Battery Backup	Lithium-Ion
SmartTek® Diagnostic System	Standard
Place of Origin	USA

SmartTek® Diagnostic System STANDARD on all Golden models.  
All Golden lift chairs are Class II Medical Devices.



**HEAT WAVE**  
TECHNOLOGY

**STANDARD!**

Far infrared heat penetrates skin and muscles to provide a soothing heat therapy experience. Adjustable Hi-Lo settings and timers let you control the comfort!

The Regal comes standard with the following comfort and convenience features:



Adjustable Headrest & Lumbar



Open Arm Storage Compartment on Right & Left Sides



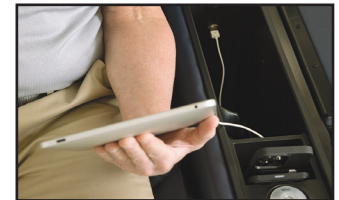
Removable Table



No-Spill Cup Holder



Wireless Smartphone Charger



USB Charging Port



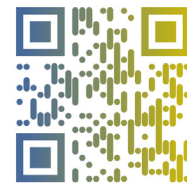
*Comfort Zone™*  
by GOLDEN

Comfort Zones 1 - 4 provide an ergonomic comfort experience with an emphasis on head and back support. Each Comfort Zone can be adjusted independently by using the exclusive AutoDrive hand control.



LOWER BODY UPPER BODY HEADREST LUMBAR TWILIGHT TILT

**WE PATENTED COMFORT™**



Scan with your smartphone camera to learn more about Comfort Zone by Golden.



Phone: 800-624-6374  
Fax: 800-628-5165  
www.goldentech.com

Literature is current at time of printing. Golden Technologies reserves the right to make changes to the product or literature at any time.

Sizes may vary depending on fabric, filling material, upholstery and carpet thickness. All measurements taken on concrete floor using levels and metal rulers.



Complies with  
UL 73 and  
CSA C22.2 No. 68



www.facebook.com/goldentechnologies